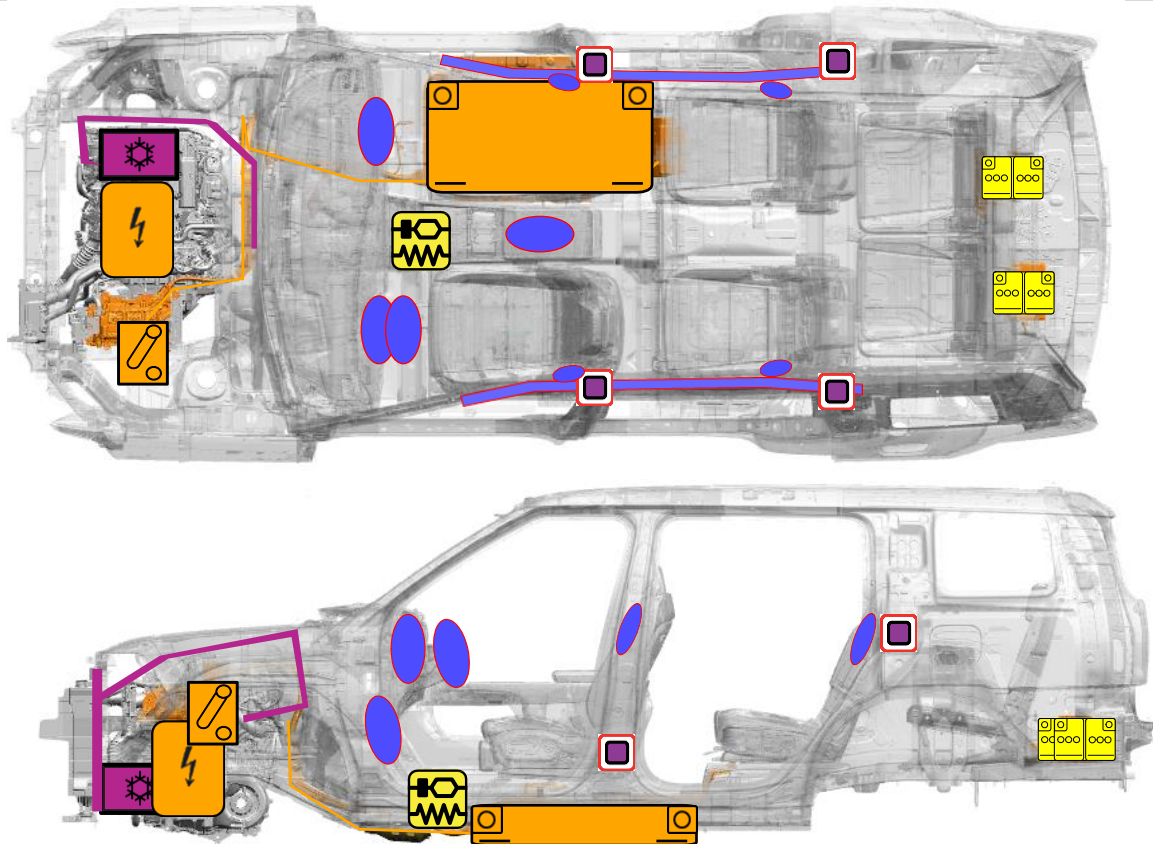




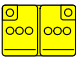




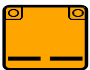




Vehicle Identification/Recognition

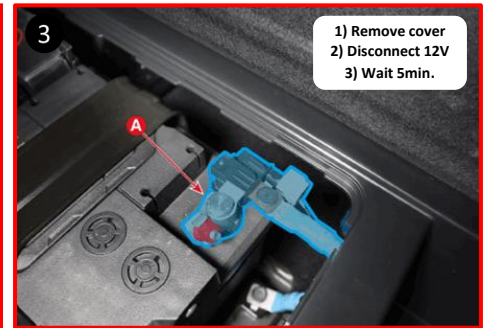
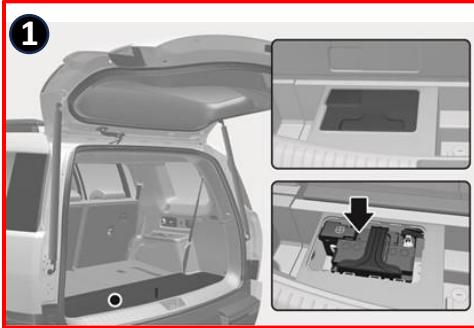


Accessing Vehicle

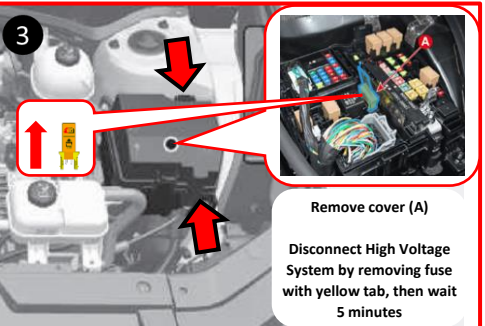
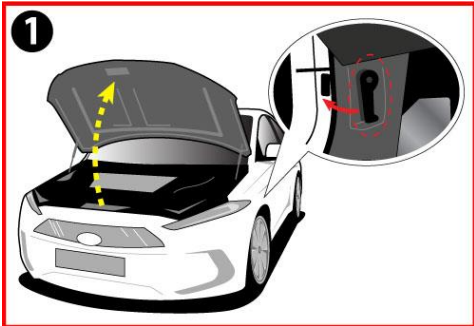


	Supplemental Restraint System Control Module (SRSCM)		Airbag		Airbag Gas Inflators
	High voltage cable		12V Battery		Air-conditioning line
	High voltage disconnect		OBC (On – Board Charger)		Motor Drive Unit
	High Voltage Battery		Air-conditioning component		Seat belt pretensioner

Disabling Vehicle



OR



Vehicle Towing Information

Tow the vehicle using a flat bed or using wheel dollies. Never tow the vehicle with the front or rear wheels on the ground



For further information, please refer to the Emergency Response Guide (ERG).

Applicable to Santa Fe Hybrid vehicles first sold in the United States.	ID. No. KMH-MX5HEV	Version No. 2024.01.08	Page 2 of 2
---	-----------------------	---------------------------	----------------