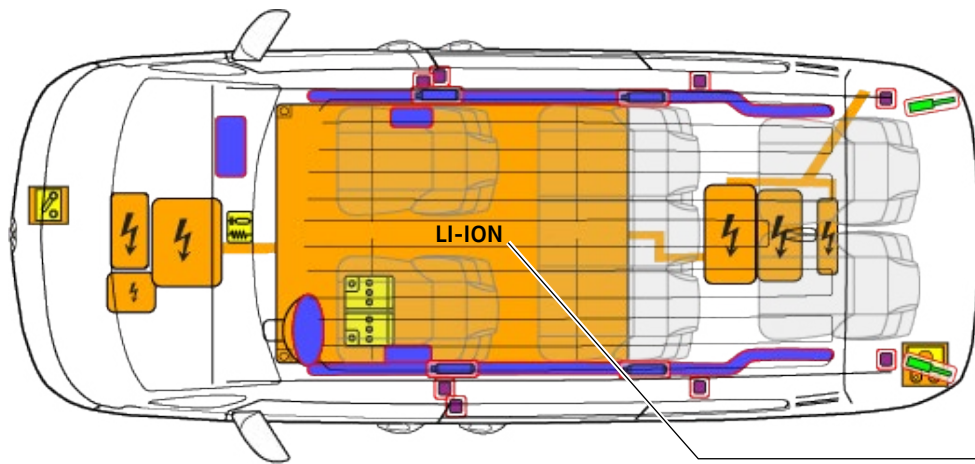




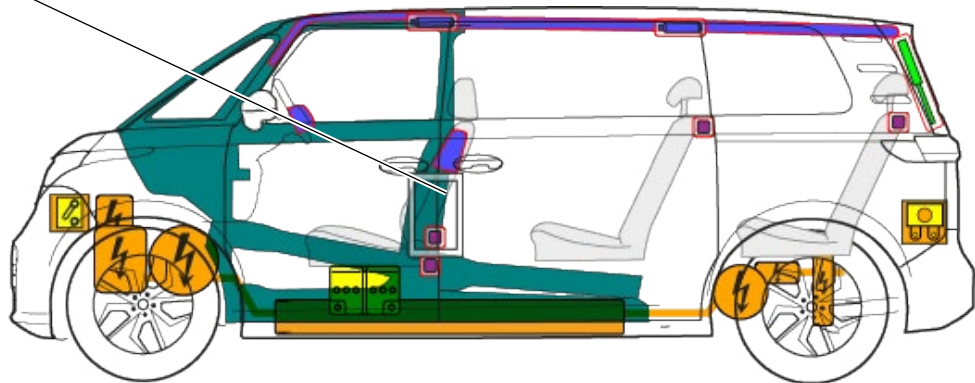
Volkswagen ID. Buzz

People, from 2024

5-door, 7-seater



9.



	Airbag		Gas generator		Safety belt pretensioner		SRS control module		Gas-pressure strut/preloaded spring
	High-strength zones		Zone requiring special attention		Low-voltage battery		High-voltage device that disconnects high voltage, low-voltage system		Fuse box, low-voltage device that disconnects high voltage
	High-voltage battery		High-voltage cable		High-voltage component				



Volkswagen ID. Buzz

People, from 2024

5-door, 7-seater

1. Identification/recognition



The electric drive motor is silent. The display in the instrument cluster (power display) indicates whether the electric drivetrain is switched off ("OFF") or is ready for operation ("READY").

Lettering



Charging socket



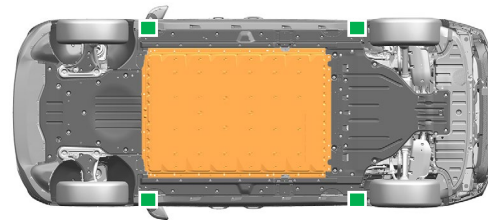
2. Immobilization/stabilization/lifting


Immobilizing vehicles

Apply the electric parking brake.



Lifting points

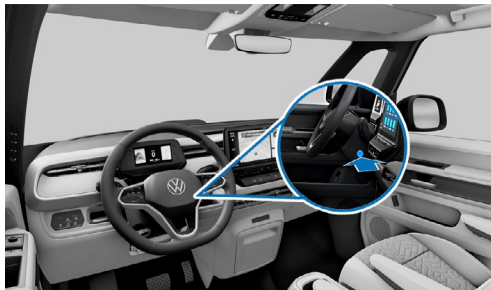


 Suitable lifting points

 High-voltage battery

3. Disable direct hazards/safety regulations

Switching off the ignition (power display "OFF")



Press the "Start/Stop" button on the steering column without engaging the brake pedal.



Keep the remote control vehicle key, key card and/or smartphone app at least five meters away from the vehicle wherever possible.

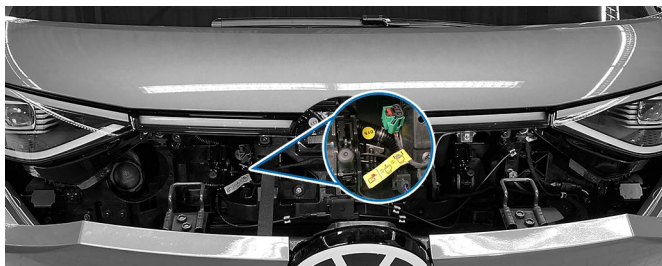
Deactivating the high-voltage system

In the event of accidents where the airbag is deployed, the high-voltage system will be deactivated automatically as soon as airbag deployment has been detected. The high-voltage system will be de-energized around 20 seconds after deactivation.

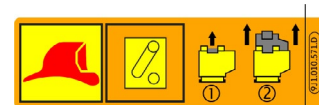


Do not touch, cut or open damaged high-voltage components, high-voltage cables or the high-voltage battery! Use appropriate personal protective equipment!

For all other cases, the high-voltage system can be deactivated as follows:



Option 1: from the engine compartment





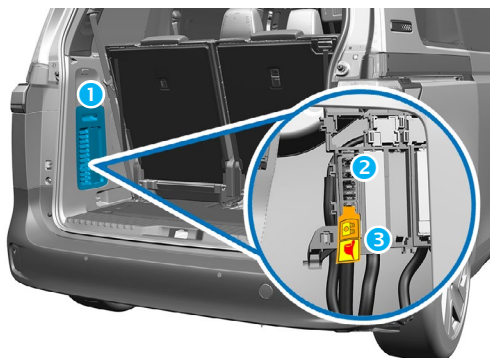
Volkswagen ID. Buzz

People, from 2024

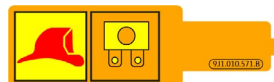
5-door, 7-seater



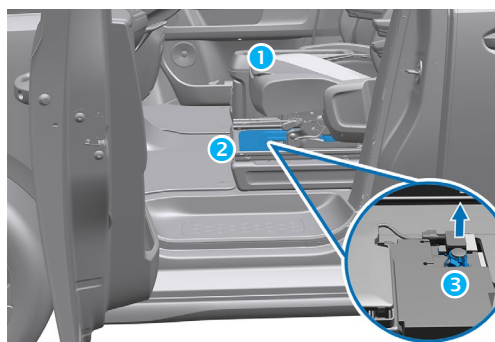
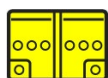
Option 2: from the luggage compartment



- 1 Remove the left-hand side trim panel
- 2 Locate the fuse (yellow label)
- 3 Remove the fuse



Deactivating the 12-volt vehicle electrical system



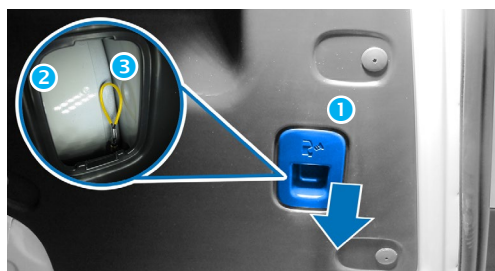
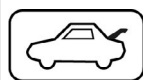
In the passenger compartment under the left-hand seat:

- 1 Move the seat all the way back
- 2 Remove the cover
- 3 Disconnect the earth connection (-)



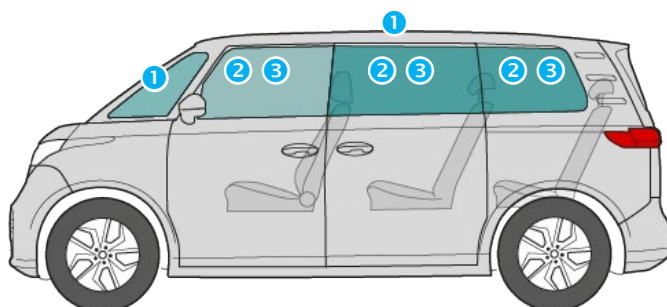
After disconnecting the 12-volt vehicle electrical system, the airbags will be deactivated. In the event of fire, airbags that have not ignited may deploy due to heat!

Disconnecting from the charging station (emergency release)



- 1 Remove the right-hand side trim panel
- 2 Locate the yellow loop for emergency release
- 3 Pull on the loop

4. Access to the occupants



Glass types:

- 1 Composite safety glass
- 2 Single-pane safety glass
- 3 Optional composite safety glass

In the event of accidents where the airbag is deployed, electrically powered doors and the trunk lid are unlocked automatically.



Volkswagen ID. Buzz

People, from 2024

5-door, 7-seater

5. Stored energy/liquids/gases/solids



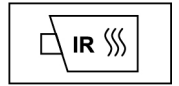
12 V



400 V
lithium-ion



In the event of mechanical deformation of the battery system, there is the risk of a thermal reaction in the high-voltage battery.
Monitor the temperature of the high-voltage battery!



6. In case of fire



Lithium-ion batteries can self-ignite or reignite after firefighting measures have been taken!
Use appropriate personal protective equipment!



7. In case of submersion

Once the vehicle has been recovered from the water, deactivate the high-voltage system and the 12-volt vehicle electrical system (see section 3) and let the water drain out. Use appropriate personal protective equipment!

8. Towing/transportation/storage



Lithium-ion batteries can self-ignite or reignite after firefighting measures have been taken!
Use appropriate personal protective equipment!

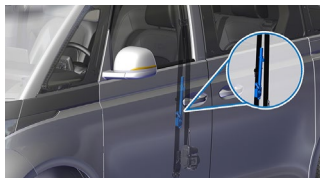


If the vehicle has been involved in an accident or if the high-voltage battery is damaged or not working properly: deactivate the high-voltage system (see section 3). Park the vehicle a safe distance (at least five meters) away from buildings and other vehicles (quarantine area).



If the vehicle has been involved in an accident, do not tow it on its drive axles.

9. Important additional information



Cutting through the B-pillar may damage the safety belt pretensioners!

10. Explanation of pictograms used



Flammable



Corrosives



Hazardous to the human health



Environmental hazard



Electric Vehicle



Warning, Electricity



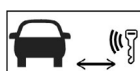
General warning sign



Use water to extinguish the fire



Dangerous voltage



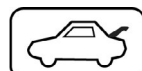
Remove smart key



Use thermal Infra-red camera



Bonnet



Boot